

STANDARD SHADES

▲ **FS 1375 BRIGHT WHITE**

T: 83.65% D: 81.83% S: 1.82%

▲ **FS 1300 BONE WHITE**

T: 71.07% D: 69.20% S: 1.87%

FS 1101 OXIDE RED

T: 9.57% D: 7.53% S: 2.04%



FS 1008 FLAKE GREY

T: 55.20% D: 53.38% S: 1.82%



▲ **FS 1379 SAND BEIGE**

T: 68.60% D: 66.83% S: 1.77%



FS 1241 TILE RED

T: 20.60% D: 18.68% S: 1.92%



FS 1028 GRANITE GREY

T: 37.99% D: 36.05% S: 1.94%



FS 1348 STONE BEIGE

T: 53.33% D: 51.32% S: 2.01%



FS 1143 RUST RED

T: 7.77% D: 6.03% S: 1.74%



FS 1004 CEMENT GREY

T: 31.46% D: 29.46% S: 2.00%



FS 1311 PEBBLE BEIGE

T: 26.82% D: 24.96% S: 1.86%



FS 1509 SEA GREEN

T: 42.98% D: 41.22% S: 1.76%



FS 1040 PEWTER GREY

T: 11.96% D: 9.73% S: 2.23%



FS 1202 GOLDEN YELLOW

T: 38.18% D: 36.65% S: 1.53%



FS 1501 SOFT GREEN

T: 55.52% D: 53.74% S: 1.78%



FS 1224 TOFFEE BROWN

T: 12.65% D: 10.42% S: 2.23%



FS 1215 MARKISSA YELLOW

T: 29.69% D: 27.80% S: 1.89%



FS 1733 WATER BLUE

T: 52.92% D: 50.98% S: 1.94%

PREMIUM SHADES



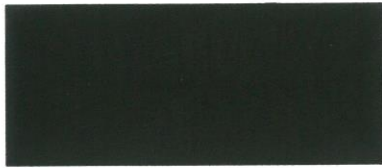
FS 1001 COAL BLACK
T: 3.86% D: 2.02% S: 1.84%



FS 1253 VIVID YELLOW
T: 49.38% D: 47.82% S: 1.56%



FS 1222 LEMON YELLOW
T: 69.47% D: 67.75% S: 1.72%



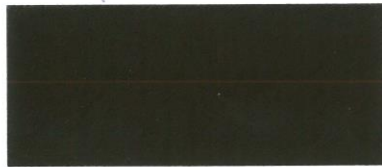
FS 1255 RICH BROWN
T: 6.67% D: 4.72% S: 1.95%



FS 1708 SERENE BLUE
T: 27.20% D: 25.37% S: 1.83%



FM 3113 CHAMPAGNE GOLD
T: 52.66% D: 49.46% S: 3.20%



FS 1150 COCOA BROWN
T: 6.50% D: 4.50% S: 2.00%



FS 1703 FIESTA BLUE
T: 25.45% D: 23.50% S: 1.95%



FM 3254 METALLIC ROSE PINK
T: 46.37% D: 42.78% S: 3.59%



FS 1453 MOSS GREEN
T: 11.86% D: 9.85% S: 2.01%



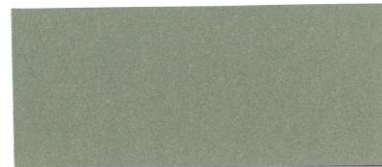
FM 3002 METALLIC SILVER
T: 61.24% D: 57.02% S: 4.22%



FM 3508 METALLIC BERYL GREEN
T: 18.91% D: 16.72% S: 2.19%



FS 1541 GRASS GREEN
T: 24.88% D: 23.08% S: 1.80%



FM 3032 GREY SILVER
T: 26.32% D: 23.74% S: 2.58%



FM 3761 METALLIC TWILIGHT BLUE
T: 21.16% D: 19.36% S: 1.80%



FS 1661 AQUA GREEN
T: 30.47% D: 28.88% S: 1.59%



FM 3030 CHAMPAGNE SILVER
T: 44.72% D: 41.82% S: 2.90%



FM 3234 METALLIC DEEP BRONZE
T: 6.94% D: 5.22% S: 1.72%

CLASSIC SHADES



FS 1555 SMART GREEN
T: 12.46% D: 10.74% S: 1.72%



▲ FM 3181 HARVEST GOLD
T: 52.10% D: 45.42% S: 6.68%



FM 3088 GLITTER SILVER
T: 67.15% D: 58.72% S: 8.43%



FS 1717 PANTONE BLUE
T: 17.04% D: 15.43% S: 1.61%



FM 3131 PURE GOLD
T: 46.60% D: 43.37% S: 3.23%



FM 3073 STAR SILVER
T: 67.36% D: 59.44% S: 7.92%



FS 1730 ROYAL BLUE
T: 9.08% D: 7.24% S: 1.84%



FM 3263 METALLIC PEARL GREY
T: 27.93% D: 25.22% S: 2.71%



FM 3020 SPARKLE SILVER
T: 47.99% D: 43.91% S: 4.08%



FS 1772 MID BLUE
T: 11.48% D: 9.64% S: 1.84%



FM 3773 METALLIC HORIZON BLUE
T: 35.28% D: 32.11% S: 3.17%



FM 3033 BRIGHT SILVER
T: 59.67% D: 54.38% S: 5.29%

▲ Must be 10 - 15 microns above the specified dry film thickness.

EXTERNAL DAYLIGHT REFLECTANCE ON COATED ALUMINIUM SUBSTRATES

T :	Total Reflectance
D :	Diffuse Reflectance
S :	Specular Reflectance
TEST METHOD :	Total, diffuse and specular reflectance measurement - using a spectrophotometer with a 150mm diameter integrating sphere- ASTM E903.

The standard colour selection has been extended to an array of striking solid and metallic colours. Metallic and certain exotic colours require clear coat to ensure better performance of the system. (Kindly refer to coating specification mentioned in DNT Fluorocarbon Brochure)

Most blue and deep blue, green and exotic colours are higher in price due to special pigments required. Prices for standard colours may vary from colour to colour.

The colours on this chart are as close to actual paint colours as modern printing techniques would allow. Custom-match colours are also available within the limits of durable ceramic and metal oxide colour pigments to match any design needs.

